

RECEIVED  
LARAMIE COUNTY  
CHEYENNE, WY.

CERTIFIED LAND CORNER RECORDATION

DESCRIPTION OF CORNER EVIDENCE FOUND, AND ORIGINAL RECORD (if known)  
Found no evidence of previous monumentation.

88 NOV 9 AM 9 09

S.12 S.7  
S.13 S.18  
T.15N  
R.67W., R.66W.  
6th P.M.

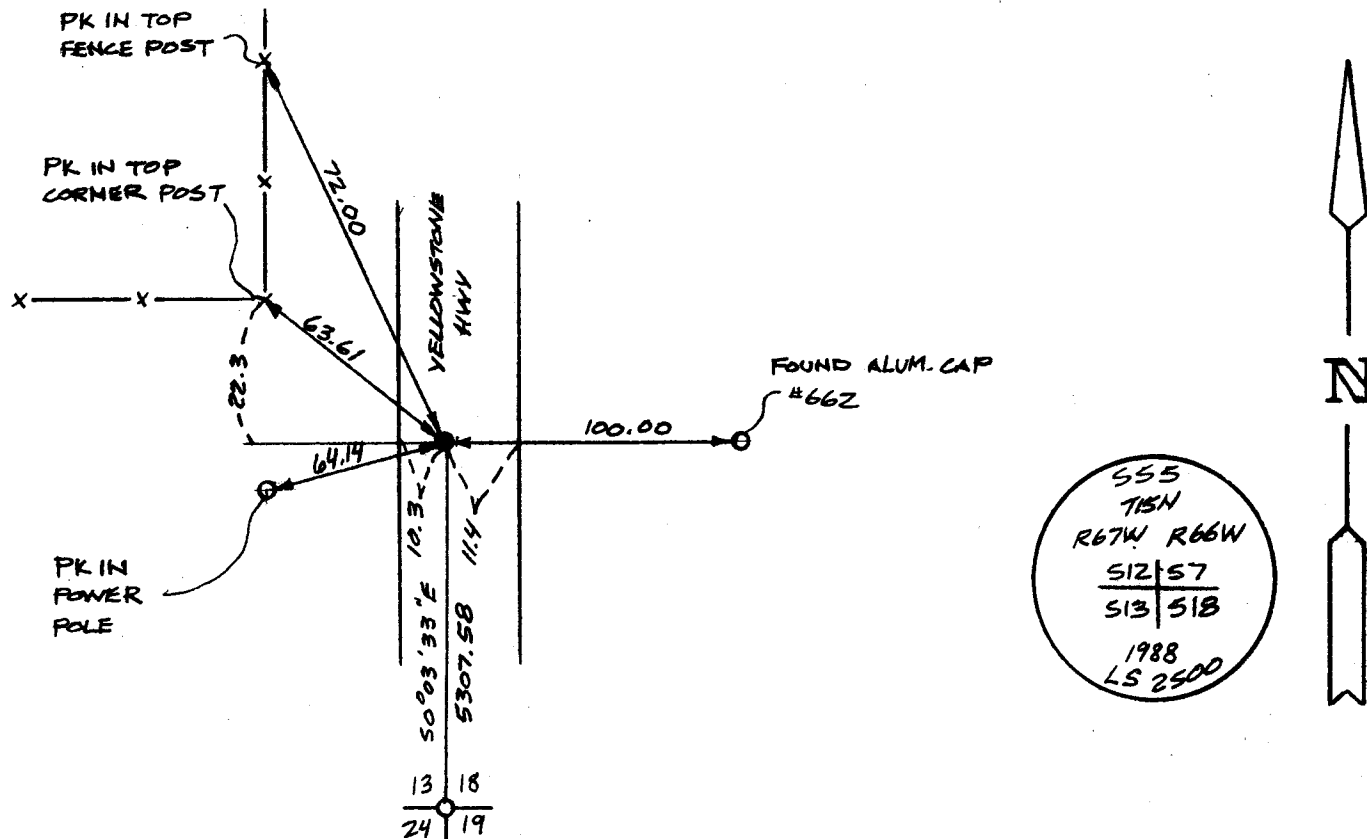
G.L.O. Record: Unknown.

DESCRIPTION OF MONUMENT AND ACCESSORIES ESTABLISHED  
TO PERPETUATE THE ORIGINAL LOCATION OF THIS CORNER:

At the corner: Set 5/8" x 18" rebar with 2" Aluminum Cap 0.05 feet below road surface and stamped as shown below. 100' West of Reference Monument set by L.S. #662.

Accessories: See ties below.

SKETCH, WITH COURSE AND DISTANCE TO ADJACENT CORNER IF DETERMINED IN THIS SURVEY.  
(May Sketch or Paste Reproduction on Reverse Side.)



I, John A. Steil certify that I have carefully performed or reviewed the work done on the diagrammed corner as reported on this recordation form and approve the same.

*John A. Steil*  
Signature of Surveyor

L.S. 2500  
Registration No.

STATE OF WYOMING,  
Office of Clerk and Recorder,  
County of \_\_\_\_\_

This "corner record" was filed for record on the \_\_\_\_\_ day of \_\_\_\_\_, 19\_\_\_\_, was noted on the cross-index plat and is assigned page No. \_\_\_\_\_, in book No. \_\_\_\_\_.

County Official			
Cross Index No. J-1	T. 15N	R. 66W	Mer. 6th
J-25	T. 15N	R. 67W	Mer. 6th
_____	T. _____	R. _____	Mer. _____
_____	T. _____	R. _____	Mer. _____
_____	T. _____	R. _____	Mer. _____
_____	T. _____	R. _____	Mer. _____
_____	T. _____	R. _____	Mer. _____